

# ROAD INDEX

I	RADCLIFFE RD.	B1-F1
J	BASCOMBE RD. BRAKEMAN RD.	F2-F4 D1-D4
K	KILE RD.	62-66
L	CHARDON WINDSOR RD. CLARIDON TROY RD. CUTTS RD.	A6-D6 D6-E6 B4-B5
M	VENUS RD.	E3-E4
N	NORTH BROWN RD.	B2
O	OLD STATE RD.	B1-E6
P	PEARL RD.	A2-C2
Q	HIGH COUNTRY DR. HOLI-DALE DR.	E4 C6
R	SAWMILL DR. SISSON RD. SOUTH BROWN RD. SUMNER RD.	C4-C5 E6-G6 B3 F1-F2
S	TAYLOR WELLS RD.	C6
T	VENUS RD.	E3-E4
U	WILLIAMS RD. WOODIN RD. WILDWOOD DR. WILLOW LANE	E1-E3 A4-D4 B3 D1
V	WILLIAMS RD. WOODIN RD. WILDWOOD DR. WILLOW LANE	E1-E3 A4-D4 B3 D1
W	WILLIAMS RD. WOODIN RD. WILDWOOD DR. WILLOW LANE	E1-E3 A4-D4 B3 D1
X		
Y		
Z		

① HAMBDEN ELEMENTARY SCHOOL  
 ② HAMBDEN CONGREGATIONAL CH.  
 ③ CHRISTIAN & MISSIONARY ALLIANCE CH.  
 ④ HAMBDEN CEMETERY  
 ⑤ HAMBDEN VOL. FIRE DEPT.  
 ⑥ HAMBDEN TOWN HALL

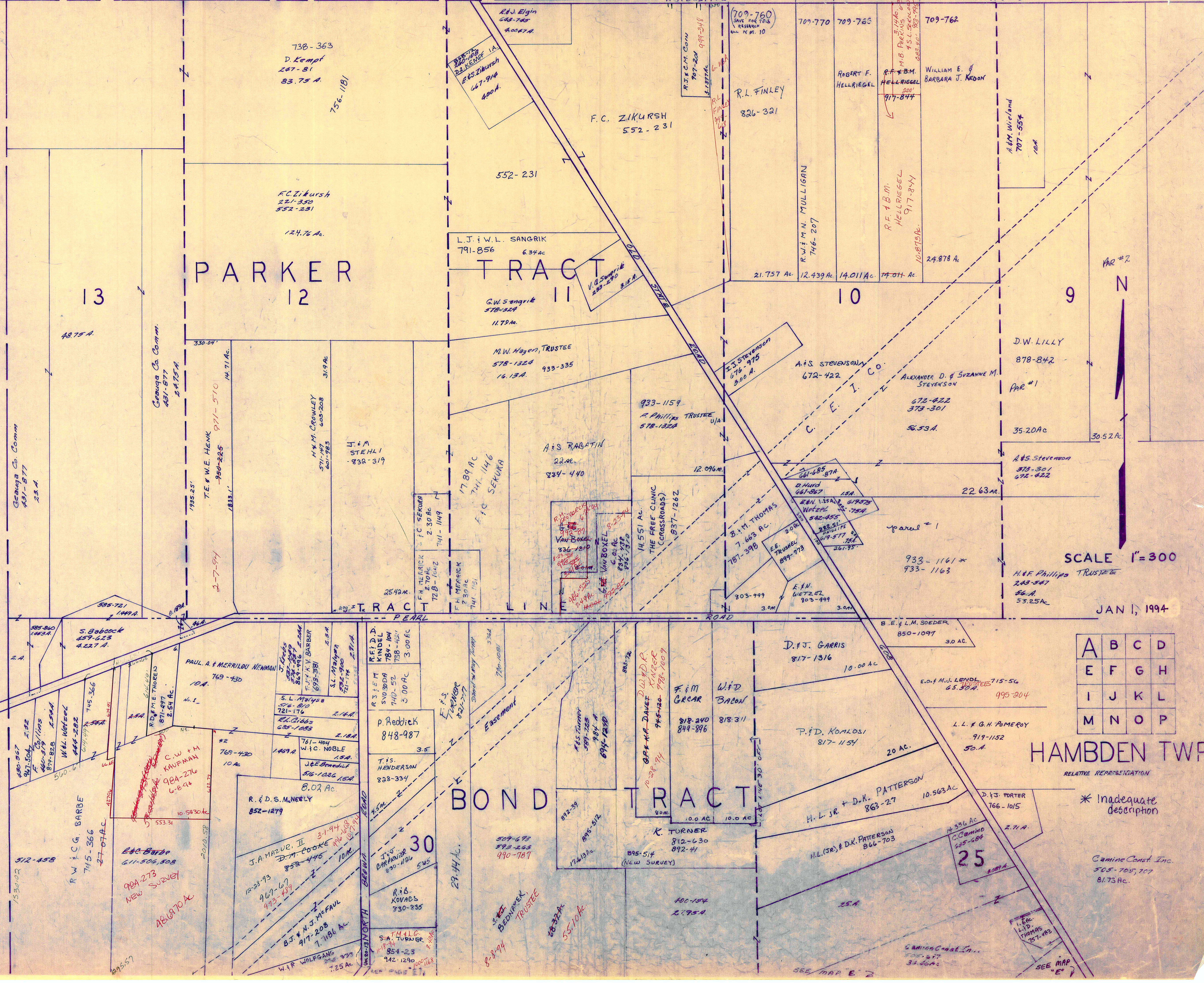
## HAMBDEN TOWNSHIP

SCALE - 1" = 2000'  
 ROBERT L. PHILLIPS,  
 GEauga COUNTY ENGINEER

— UNPAVED ROAD      — RAILROAD  
 — PAVED ROAD        — TOWNSHIP LINE  
 - - - COUNTY LINE     - - - CORPORATION LINE

C H A R D O N T W P

L A K E C O U N T Y



# PARKER TRACT

# BOND TRACT

# HAMB DEN TWP

PAR #2

PAR #1

JAN 1, 1994

SCALE 1"=300

A	B	C	D
E	F	G	H
I	J	K	L
M	N	O	P

RELATIVE REPRESENTATION

\* Inadequate description

Camino Const. Inc.  
505-705-707  
81.73 AC.

25

30

98A-273  
NEW SURVEY

98A-276  
68-94

98A-277  
68-94

98A-278  
68-94

98A-279  
68-94

98A-280  
68-94

98A-281  
68-94

98A-282  
68-94

98A-283  
68-94

98A-284  
68-94

98A-285  
68-94

98A-286  
68-94

98A-287  
68-94

98A-288  
68-94

98A-289  
68-94

98A-290  
68-94

98A-291  
68-94

98A-292  
68-94

98A-293  
68-94

98A-294  
68-94

98A-295  
68-94

98A-296  
68-94

98A-297  
68-94

98A-298  
68-94

98A-299  
68-94

98A-300  
68-94

98A-301  
68-94

98A-302  
68-94

98A-303  
68-94

98A-304  
68-94

98A-305  
68-94

98A-306  
68-94

98A-307  
68-94

98A-308  
68-94

98A-309  
68-94

98A-310  
68-94

98A-311  
68-94

98A-312  
68-94

98A-313  
68-94

98A-314  
68-94

98A-315  
68-94

98A-316  
68-94

98A-317  
68-94

98A-318  
68-94

98A-319  
68-94

98A-320  
68-94

98A-321  
68-94

98A-322  
68-94

98A-323  
68-94

98A-324  
68-94

98A-325  
68-94

98A-326  
68-94

98A-327  
68-94

98A-328  
68-94

98A-329  
68-94

98A-330  
68-94

98A-331  
68-94

98A-332  
68-94

98A-333  
68-94

98A-334  
68-94

98A-335  
68-94

98A-336  
68-94

98A-337  
68-94

98A-338  
68-94

98A-339  
68-94

98A-340  
68-94

98A-341  
68-94

98A-342  
68-94

98A-343  
68-94

98A-344  
68-94

98A-345  
68-94

98A-346  
68-94

98A-347  
68-94

98A-348  
68-94

98A-349  
68-94

98A-350  
68-94

98A-351  
68-94

98A-352  
68-94

98A-353  
68-94

98A-354  
68-94

98A-355  
68-94

98A-356  
68-94

98A-357  
68-94

98A-358  
68-94

98A-359  
68-94

98A-360  
68-94

98A-361  
68-94

98A-362  
68-94

98A-363  
68-94

98A-364  
68-94

98A-365  
68-94

98A-366  
68-94

98A-367  
68-94

98A-368  
68-94

98A-369  
68-94

98A-370  
68-94

98A-371  
68-94

98A-372  
68-94

98A-373  
68-94

98A-374  
68-94

98A-375  
68-94

98A-376  
68-94

98A-377  
68-94

98A-378  
68-94

98A-379  
68-94

98A-380  
68-94

98A-381  
68-94

98A-382  
68-94

98A-383  
68-94

98A-384  
68-94

98A-385  
68-94

98A-386  
68-94

98A-387  
68-94

98A-388  
68-94

98A-389  
68-94

98A-390  
68-94

98A-391  
68-94

98A-392  
68-94

98A-393  
68-94

98A-394  
68-94

98A-395  
68-94

98A-396  
68-94

98A-397  
68-94

98A-398  
68-94

98A-399  
68-94

98A-400  
68-94

98A-401  
68-94

98A-402  
68-94

98A-403  
68-94

98A-404  
68-94

98A-405  
68-94

98A-406  
68-94

98A-407  
68-94

98A-408  
68-94

98A-409  
68-94

98A-410  
68-94

98A-411  
68-94

98A-412  
68-94

98A-413  
68-94

98A-414  
68-94

98A-415  
68-94

98A-416  
68-94

98A-417  
68-94

98A-418  
68-94

98A-419  
68-94

98A-420  
68-94

98A-421  
68-94

98A-422  
68-94

98A-423  
68-94

98A-424  
68-94

98A-425  
68-94

98A-426  
68-94

98A-427  
68-94

98A-428  
68-94

98A-429  
68-94

98A-430  
68-94

98A-431  
68-94

98A-432  
68-94

98A-433  
68-94

98A-434  
68-94

98A-435  
68-94

98A-436  
68-94

98A-437  
68-94

98A-438  
68-94

98A-439  
68-94

98A-440  
68-94

98A-441  
68-94

98A-442  
68-94

98A-443  
68-94

98A-444  
68-94

98A-445  
68-94

98A-446  
68-94

98A-447  
68-94

98A-448  
68-94

98A-449  
68-94

98A-450  
68-94

98A-451  
68-94

98A-452  
68-94

98A-453  
68-94

98A-454  
68-94

98A-455  
68-94

98A-456  
68-94

98A-457  
68-94

98A-458  
68-94

98A-459  
68-94

98A-460  
68-94

98A-461  
68-94

98A-462  
68-94

98A-463  
68-94

98A-464  
68-94

98A-465  
68-94

98A-466  
68-94

98A-467  
68-94

98A-468  
68-94

98A-469  
68-94

98A-470  
68-94

98A-471  
68-94

98A-472  
68-94

98A-473  
68-94

98A-474  
68-94

98A-475  
68-94

98A-476  
68-94

98A-477  
68-94

98A-478  
68-94

98A-479  
68-94

98A-480  
68-94

98A-481  
68-94

98A-482  
68-94

98A-483  
68-94

98A-484  
68-94

98A-485  
68-94

98A-486  
68-94

98A-487  
68-94

98A-488  
68-94

98A-489  
68-94

98A-490  
68-94

98A-491  
68-94

98A-492  
68-94

98A-493  
68-94

98A-494  
68-94

98A-495  
68-94

98A-496  
68-94

98A-497  
68-94

98A-498  
68-94

98A-499  
68-94

98A-500  
68-94

98A-501  
68-94

98A-502  
68-94

98A-503  
68-94

98A-504  
68-94

98A-505  
68-94

98A-506  
68-94

98A-507  
68-94

98A-508  
68-94

98A-509  
68-94

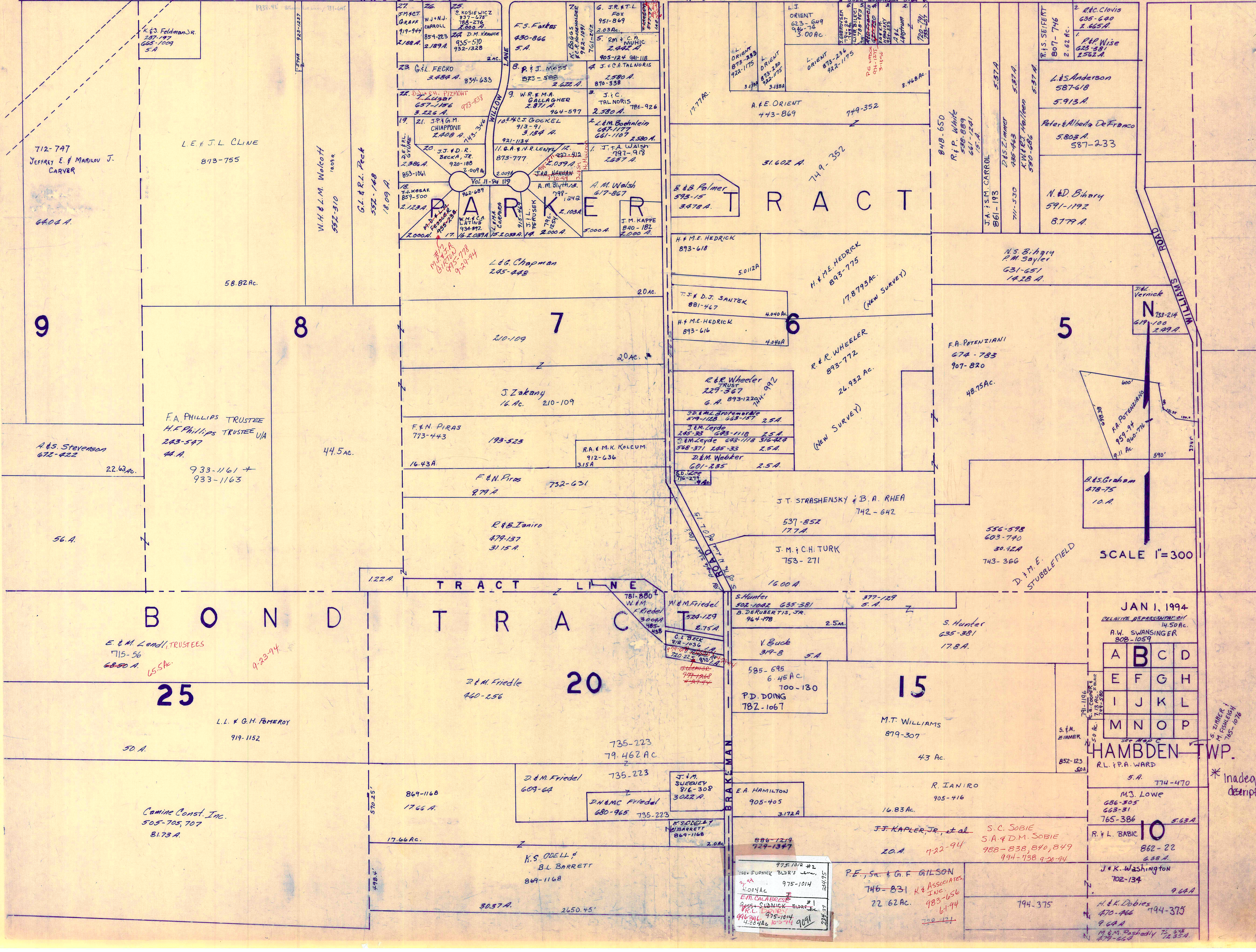
98A-510  
68-94

98A-511  
68-94

98A-512  
68-94

98A-513  
68-94

L A K E C O U N T Y



SCALE 1"=300

JAN 1, 1994  
RELATIVE REPRESENTATION 14.50 AC.  
A.W. SWANSINGER  
808-1059

A	B	C	D
E	F	G	H
I	J	K	L
M	N	O	P

HAMBDEN TWP.  
R.L. P.A. WARD  
5.0 A. 774-470

M.S. LOWE  
686-505  
663-31  
765-386 5.63A

R. & L. BABIC  
862-22  
638 A.

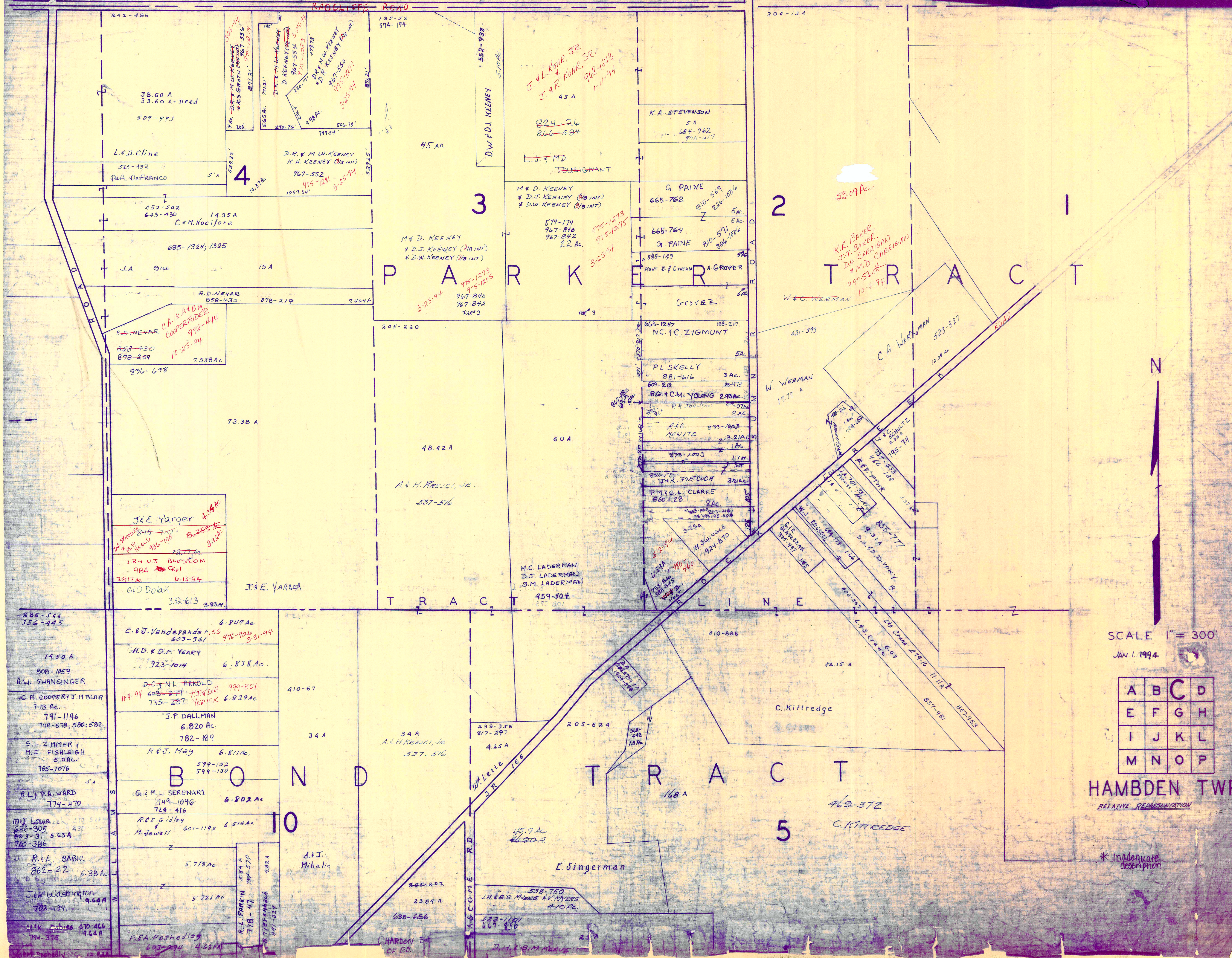
J. & K. WASHINGTON  
702-134 9.62A

H. & K. DOBIES  
470-466 194-375  
9.62A

M. & M. DASHEDLY  
279-662 72.35A

\* Inadequate description

L A K E C O U N T Y

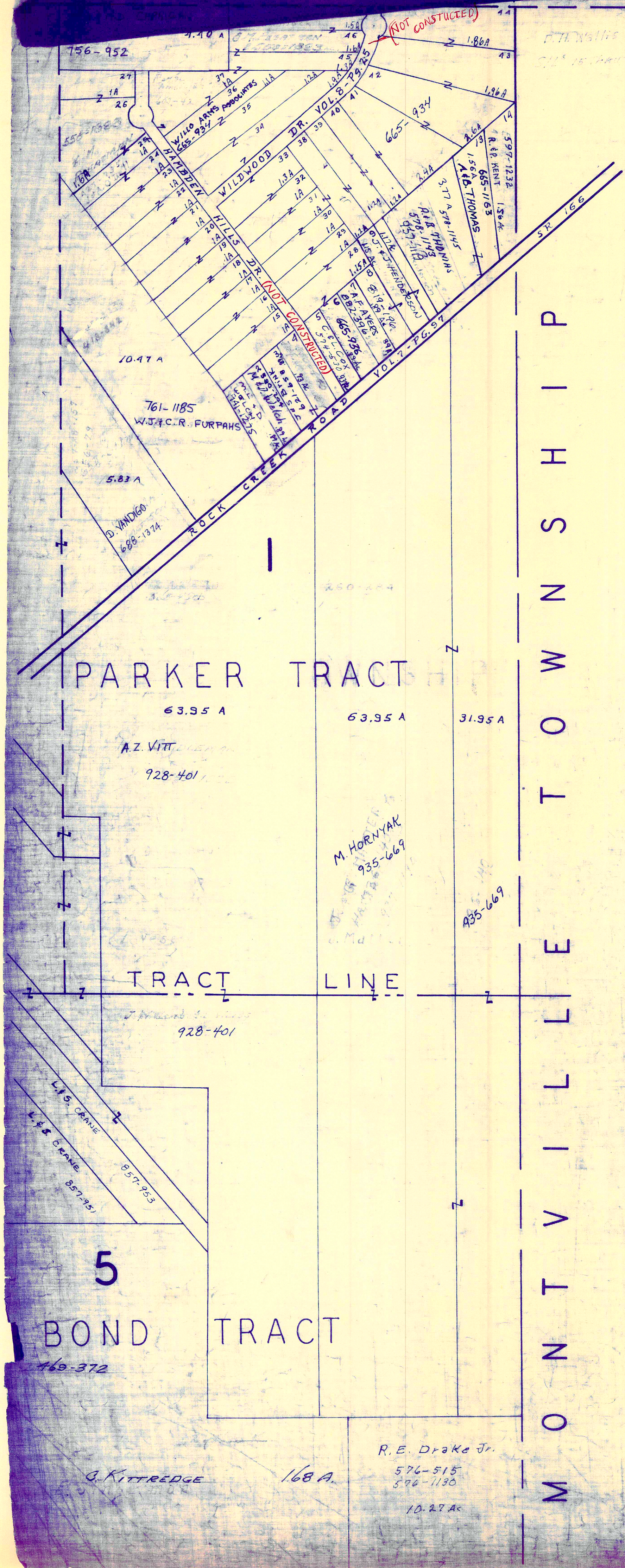


SCALE 1" = 300'  
JAN. 1, 1994

A	B	C	D
E	F	G	H
I	J	K	L
M	N	O	P

HAMB DEN TWP.  
RELATIVE REPRESENTATION

\* Inadequate description



M  
O  
N  
T  
V  
I  
L  
L  
E  
T  
O  
W  
N  
S  
H  
I  
P



SCALE 1" = 300'  
JAN. 1, 1994

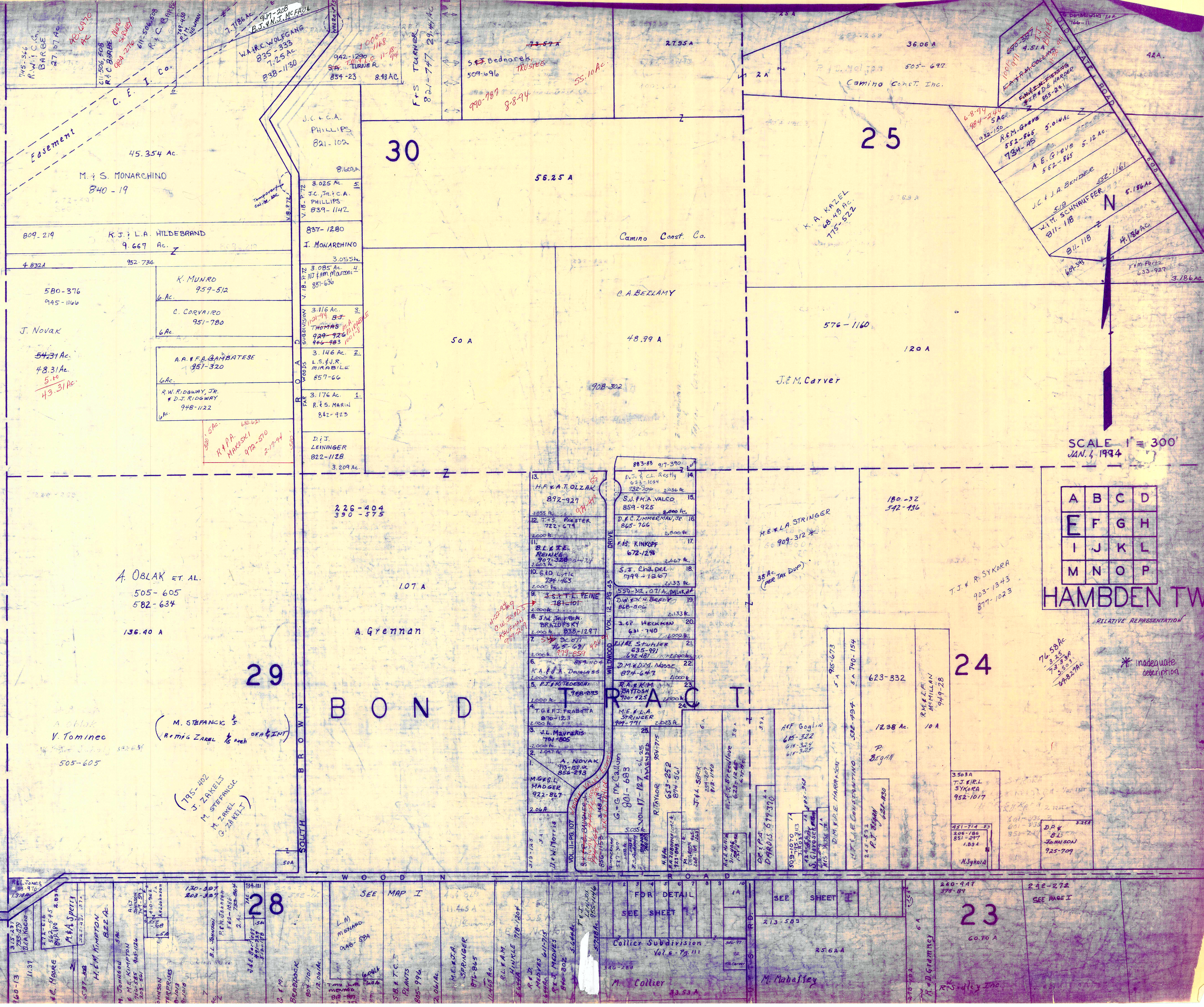
A	B	C	D
E	F	G	H
I	J	K	L
M	N	O	P

HAMB DEN TWP.

RELATIVE REPRESENTATION

\* Inadequate description

C H A R D O N T O W N S H I P



SCALE 1" = 300'  
JAN. 4, 1994

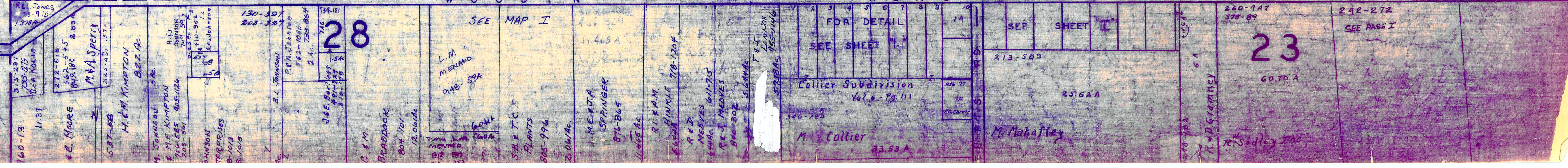
A	B	C	D
E	F	G	H
I	J	K	L
M	N	O	P

HAMB DEN TW

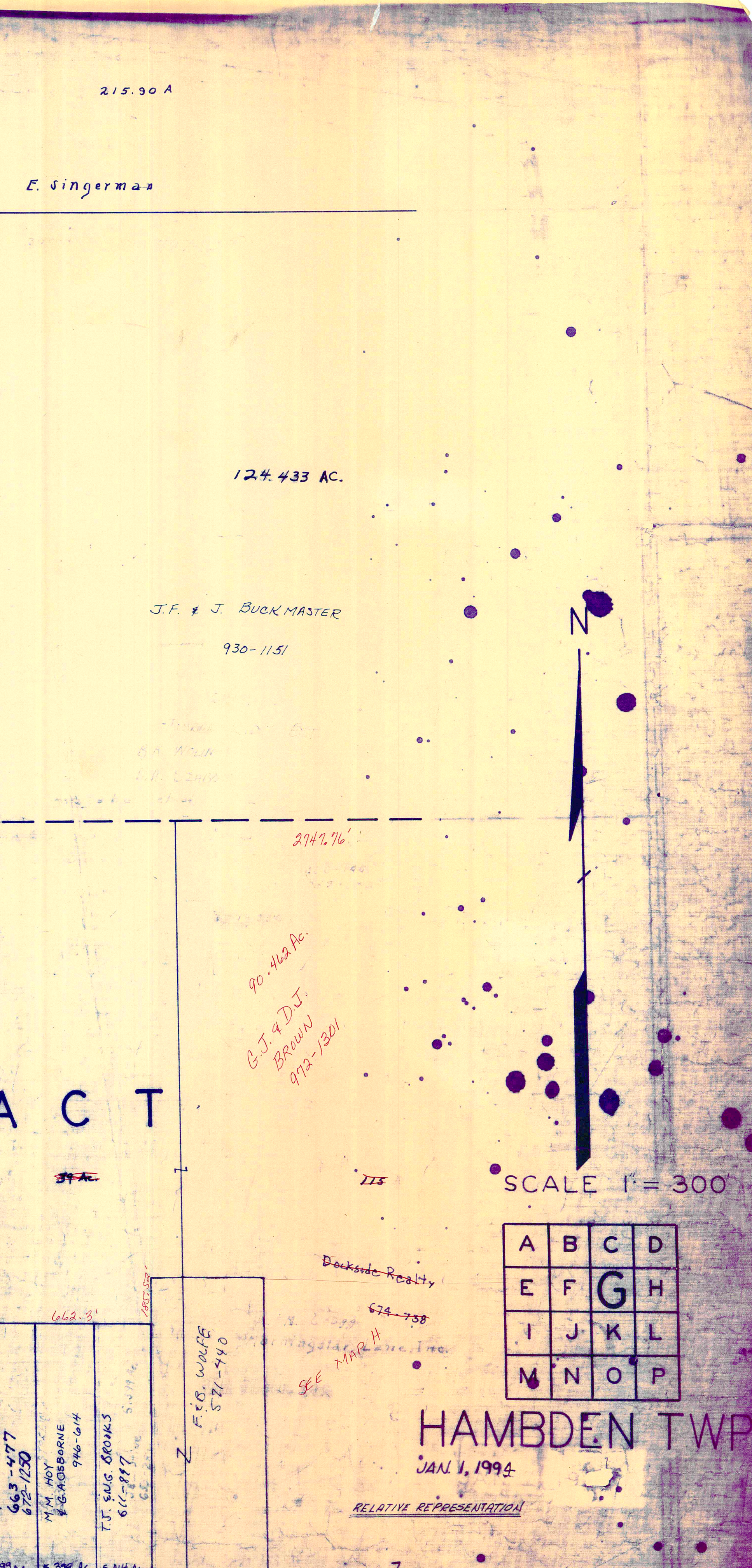
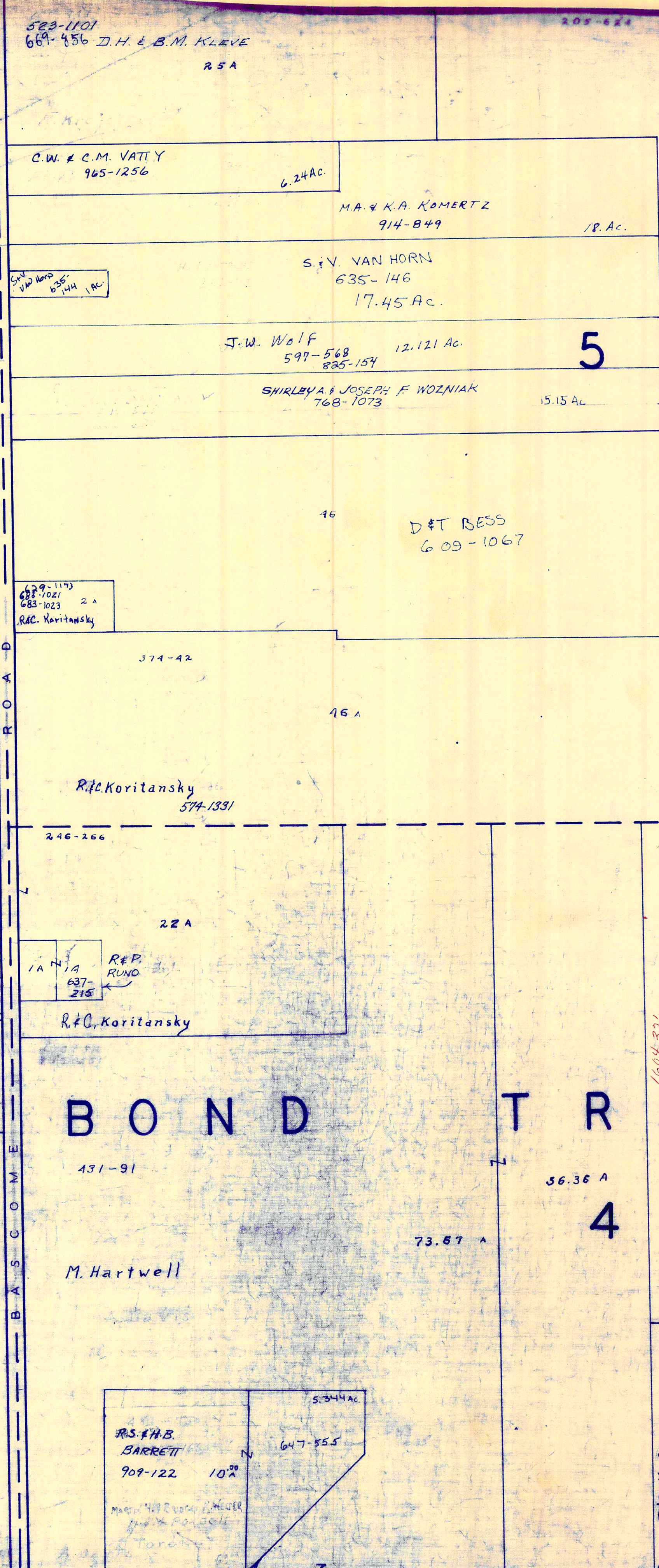
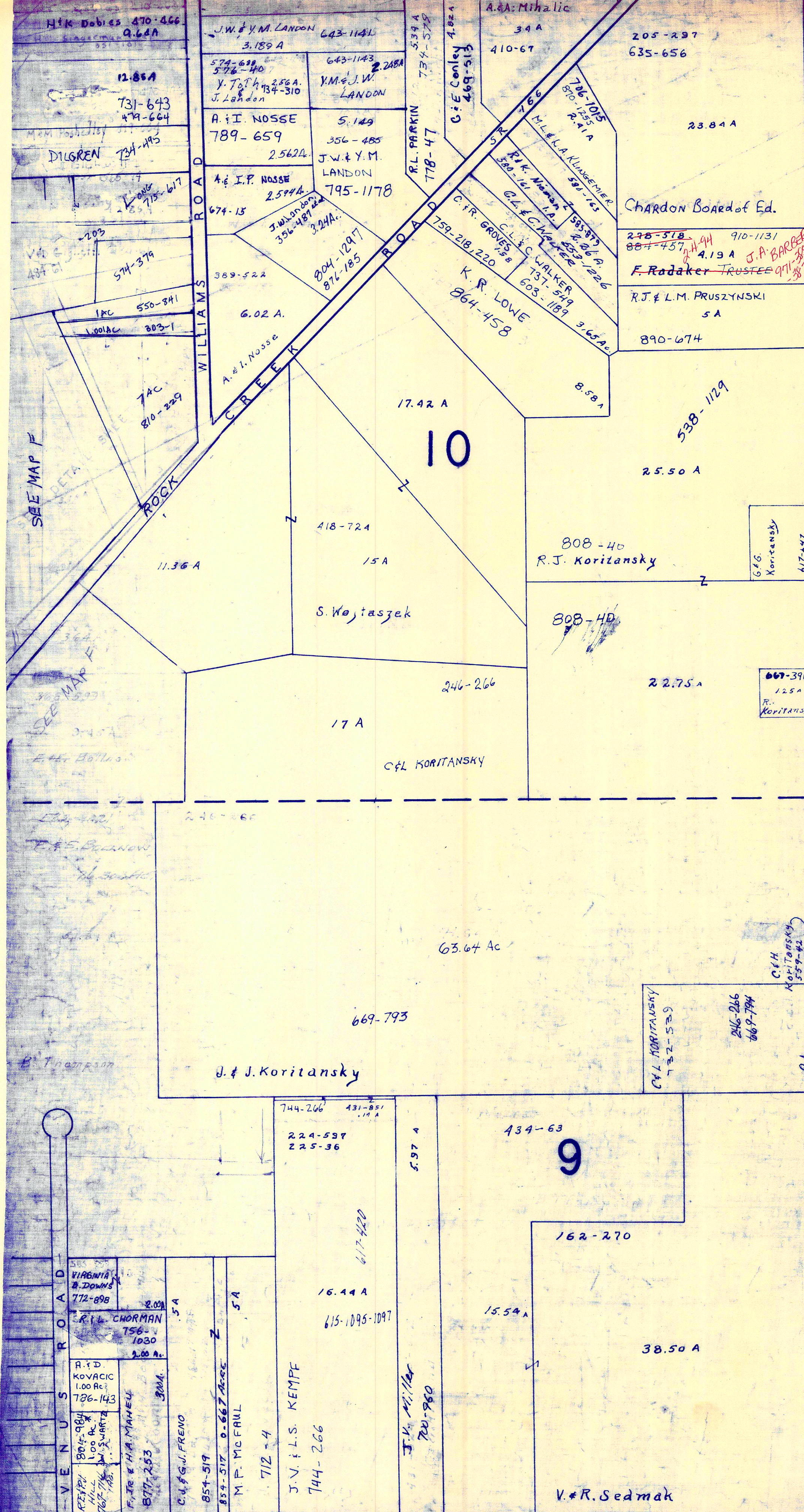
RELATIVE REPRESENTATION

\* Inadequate description

F & F Covert







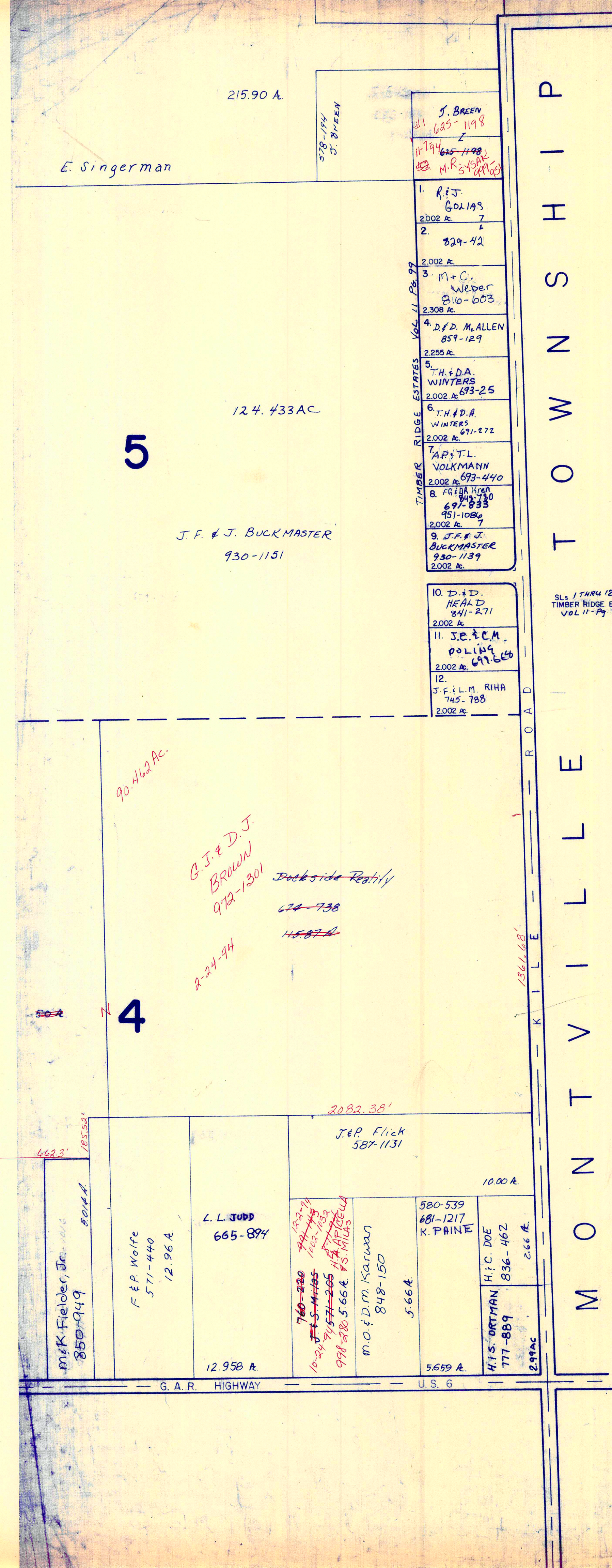
A	B	C	D
E	F	G	H
I	J	K	L
M	N	O	P

HAMB DEN TWP  
JAN. 1, 1994

RELATIVE REPRESENTATIONS

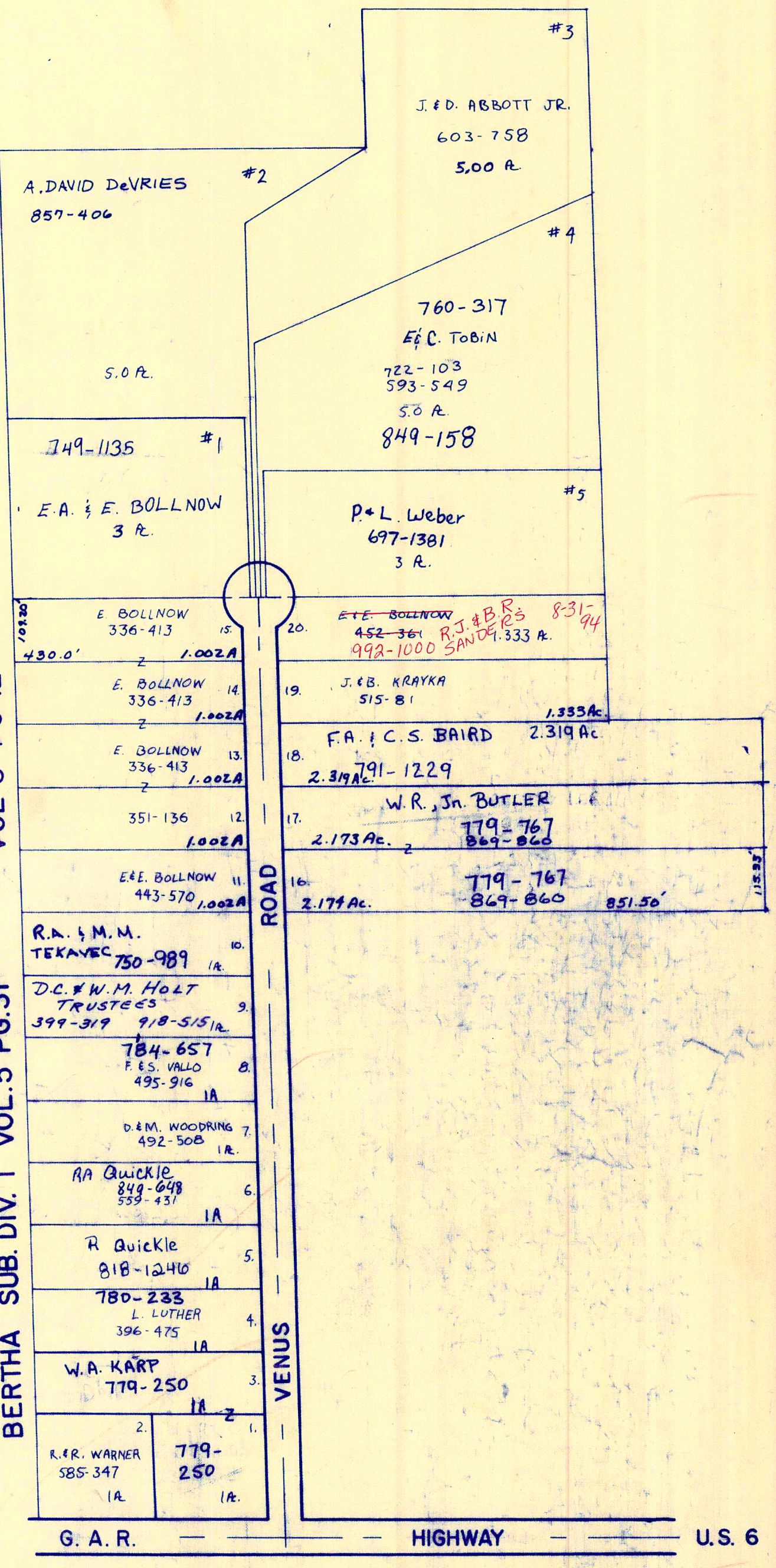
\* Inadequate description

SEE PAGE "K"

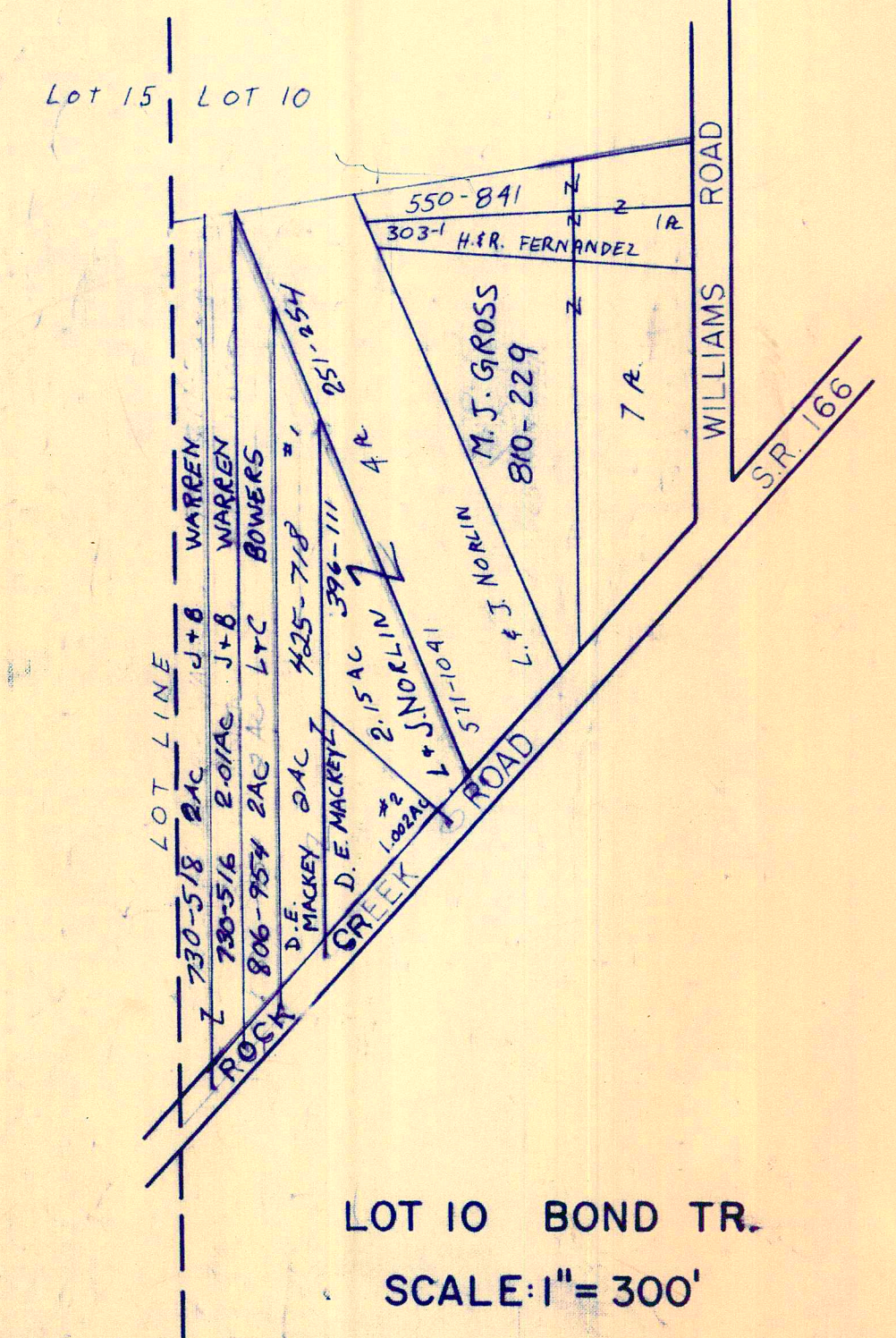


T O W N S H I P  
M O N T V I L L E

SUB. DIV. NO. 2  
VOL 8 PG 12  
BERTHA SUB. DIV. I VOL. 5 PG. 31



LOT 9 & 14 BOND TR.  
SCALE: 1" = 200'



LOT 10 BOND TR.  
SCALE: 1" = 300'

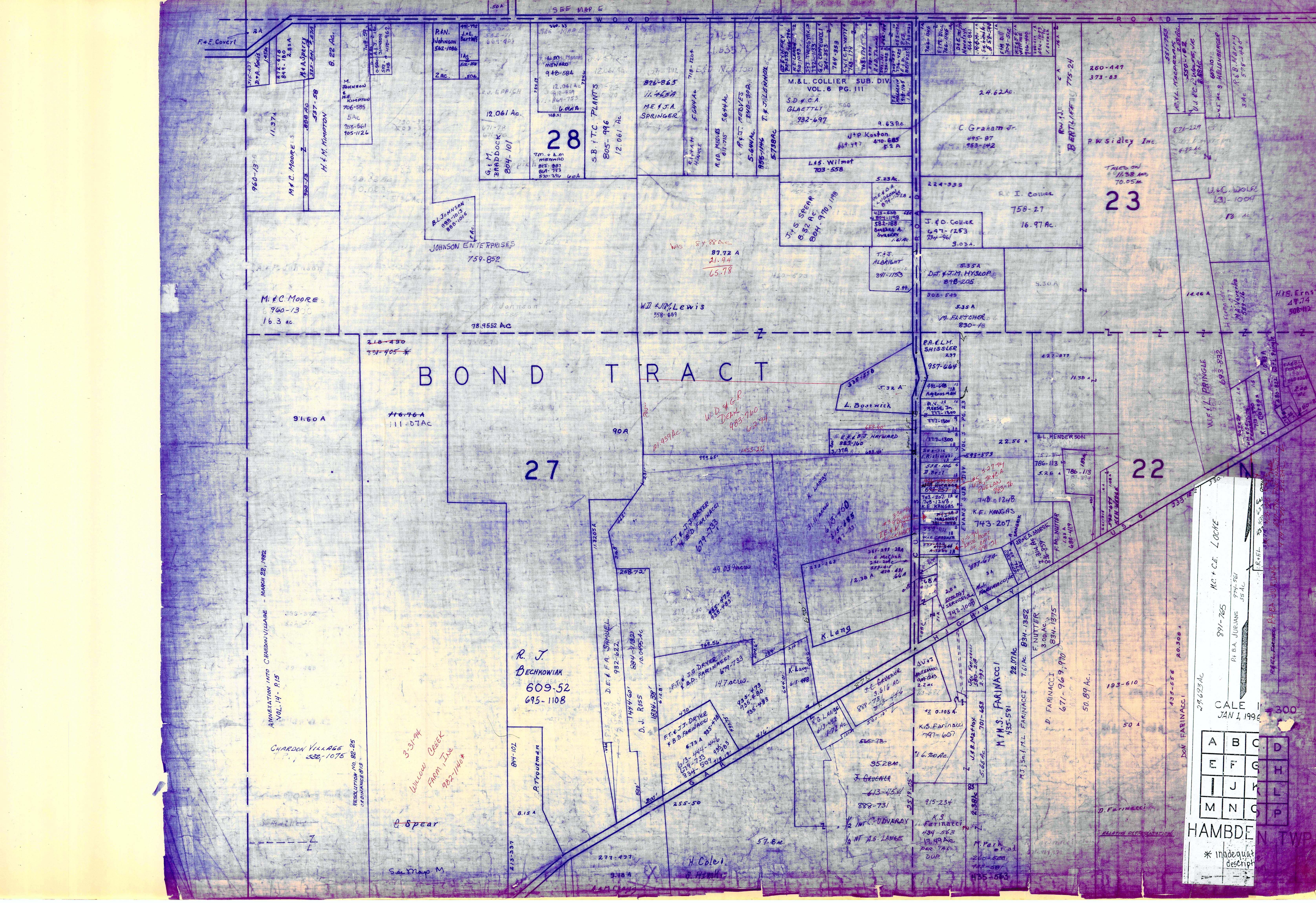
SCALE 1" = 300'  
JAN. 1, 1994

A	B	C	D
E	F	G	H
I	J	K	L
M	N	O	P

**HAMB DEN TWP.**

RELATIVE REPRESENTATION

\* Inadequate description



ANNEXATION INTO CHARDON VILLAGE - MARCH 22, 1982  
 VOL. 14 - P. 15  
 CHARDON VILLAGE  
 RESOLUTION NO. 82-25  
 OF JANUARY 13, 1982

3-31-94  
 Willow Creek  
 Farm, Inc.  
 982-1144\*

R. J.  
 DECHOWSKI  
 609-52  
 695-1108

CALE 300  
 JAN 1, 1996

A	B	C	D
E	F	G	H
I	J	K	L
M	N	O	P

HAMBDE N TWP  
 \* inadequate  
 description

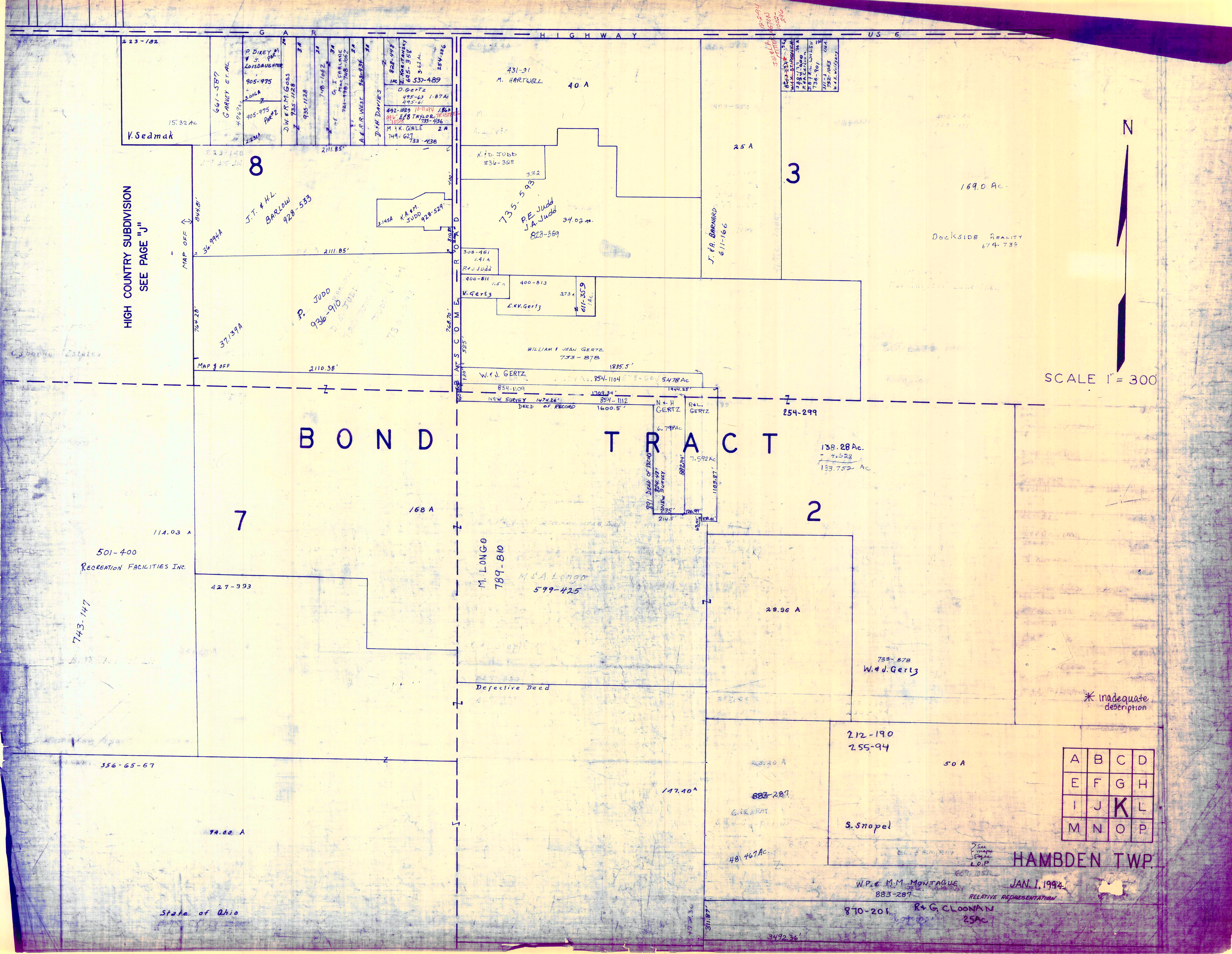
See Map M

8 Spear

H. Cole  
 8 Heron

RELATIVE REPRESENTATION





HIGH COUNTRY SUBDIVISION  
SEE PAGE "J"

N

SCALE 1" = 300'

BOND TRACT

A	B	C	D
E	F	G	H
I	J	K	L
M	N	O	P

HAMB DEN TWP

W.P. & M.M. MONTAGUE  
883-287  
RELATIVE REPRESENTATION  
JAN. 1, 1994

870-201 R & G CLOONAN  
25AC

State of Ohio

743-147

501-400  
RECREATION FACILITIES INC.

223-182  
15.32 Ac  
V. Sedmak

661-587  
GARNEY ET AL  
P. DIKEY  
LOIS DAUGHTER  
905-975  
300A  
905-975  
223A  
D.W. R. M. Goss  
935-1128  
935-1128  
748-1682  
G. I. Goss  
921-990  
748-1682  
A. R. WEST  
928-836  
D.H. DAVIES  
928-478  
E. WERTMAN  
618-558  
537-489  
254-286  
492-1029  
10-11-1911  
1868  
E. B. Taylor  
760-1058  
M. K. GALE  
2A  
749-627  
733-438

431-91  
M. HARTWELL  
40 A

25 A  
169.0 Ac.  
DOCKSIDE REALTY  
674-730

8  
36-994A  
J.T. & H.L. BARLOW  
928-533  
3145A  
K.A.M. JUDD  
928-529  
2111.85'  
2111.85'  
764.28'  
37139A  
P. JUDD  
936-910  
2110.38'  
MAP 9 OFF  
MAP 9 OFF

3  
K.F.D. Judd  
836-388  
382  
735-593  
P.E. Judd  
J.A. Judd  
34.02 Ac.  
828-889  
308-161  
1.91A  
R. J. Judd  
400-811  
1.5A  
400-813  
K. Gertz  
273A  
E.V. Gertz  
411-359  
1/4 AC  
WILLIAM & JEAN GERTZ  
733-878  
1935.5'  
W. J. GERTZ  
854-1109  
854-1104  
1709.34'  
NEW SURVEY  
DEED OF RECORD  
1600.5'  
N + H GERTZ  
6.799 AC  
R + L GERTZ  
7.592 AC  
1105.87'  
214.5'  
126.99'  
254-299  
138.28 Ac.  
4.528  
133.752 Ac

7  
114.03 A  
501-400  
RECREATION FACILITIES INC.  
427-993  
743-147  
168 A  
M. LONGO  
789-810  
M.S.A. Longo  
599-425  
1600.5'  
Defective Deed

2  
28.96 A  
733-878  
W. J. Gertz  
\* inadequate description

212-190  
255-94  
50 A  
883-287  
G. K. MONTAGUE  
S. Snopel  
48-467 AC  
311.87'  
3492.36'

74.00 A  
311.87'

117.40 A  
311.87'

870-201  
R & G CLOONAN  
25AC

3

170.00A

DOCKSIDE REALTY  
674-238

BOND TRACT

R O A D  
T O W N S H I P  
L L E  
M O N T V I L L E

2

1.	826-36 901-877	229-504 229AC	5A
1.	T.E. MICO		
2.	430-952	4.98A	
2.	R. & B. Grant 985-950 ss		
3.	K SCOTT BENA & K HENSEL BENA 874-565		
3.	5-4-94 980-922 4.98A		
4.	R.E. CROMBIE II 247-47 657-263		
4.	255-369 257-143 4.98A		
5.	G. M. NEAL & M. R. HARWELL 755-1127		
5.	257-144 259-46 4.98Ac		
6.	R. Kovaras 259-219		
6.	4.98Ac		
7.	281-345 460-398		
7.	4.98Ac		
7.	H. Tomasin		
8.	270-459 460-400 844-206		
8.	4.98Ac		
9.	D.C. SAEIYA 259-551		
9.	4.98Ac		
10.	424-826 880-177		
10.	4.98Ac		
11.	A.M. Burnett MARK & ALICE L. KOCAB 726-586		
11.	477-502 4.98Ac		
12.	DANIEL PERRY 5.187Ac P.M. & M.A. HALLOY 852-1288 990-475 991-273 997-287		
12.	3.027Ac		

817-625  
817-627

S. Snopel

W.P. & M.M. MONTAGUE  
601 885-287

48467Ac

R.M. & G.A. CLOVAN  
870-201

25Ac



SCALE 1" = 300'

RELATIVE REPRESENTATION

A	B	C	D
E	F	G	H
I	J	K	L
M	N	O	P

HAMB DEN TWP.

JAN 1 1994

\* Inadequate description





356-65-67

94 A

427-993

147.40 A

48.467Ac

W.P. & M.M. MONTAGUE  
883-287  
SEE MAP  
PGS.  
K, L & P

R.M. + G.A. CLOONAN  
870-201

25Ac

State of Ohio

17.98 A

7

2

± 100 A

764-769

P.A. SPISAK

260-274

P.A. SPISAK

764-769

31.80 A

P. Spisak

266-581

BOND

TRACT

562.34 A

6

State of Ohio

SCALE 1" = 300'

A	B	C	D
E	F	G	H
I	J	K	L
M	N	O	P

HAMBDEN TWP.

JAN. 1, 1994

RELATIVE REPRESENTATION

\* Inadequate description

J.P. & H.J. GRANTHAM 949-1412 4.24Ac F. LIOTTA + J. AMANTEA 679-1228 2.9Ac T.M. WHEELER 698-1104 2.15Ac	150' 150' 611-1173 2.19Ac A.M. LANG 611-1171 2.19Ac A.M. LANG	17.23Ac 17.23Ac 948-3594 948-3604x J. LANG 552-115 251-97 552-115	B.T.P. KEENE 558-796 2.12Ac R.P. & W.S. R. KEAL S.P. & A.N. DAVIS 480-574 D.E. HERBERT 2.16 A M. JOHNSON 281-897 865-289	901-298 B.B. & S.E. BISHOP 2.85Ac 874-468 R.P. & H. SHUMWAY R.P. & H. SHUMWAY 749-221 621-173 J.P. & M. MORVA 3.85Ac VACATED 4.10-7 E. D. BROS 866-1198 890-467 4.872 Ac	Vol 6 Pg. 11-14 765-221 E.A. WILSON STEINER 2.662 Ac 234-135 645-86 R.E. WATTT 784-177 J. BARTONE 744-180 2.19Ac J.A. BARTONE 2.19Ac J. ARINGTON 2.86Ac 667-874 423-874 J.M. DIMERSKY, B.C. 502-22
--	--	--	---	--	---

631-332

80.70 A

669-1087  
1028

J. & K. Mobasser

G.S. KOENIG

Complete Construction Service, Inc.

673-1329

667-252 to 255

Parcel # 2 49.61Ac

508-1073  
B.L. GROM  
821-823  
667-252 to 255  
Parcel # 1  
27.90Ac

CLX SINATRA  
790-54

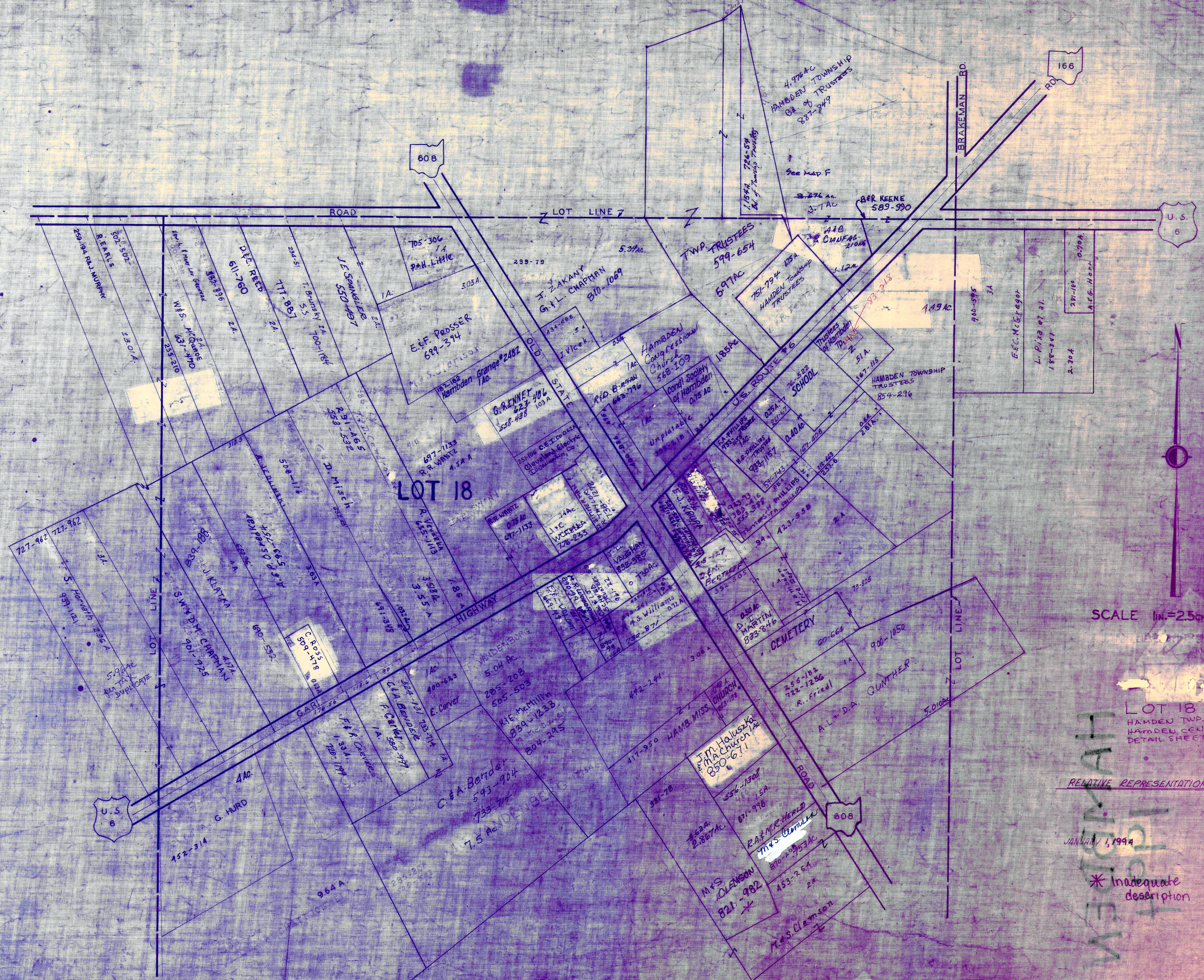
CLARIDON TOWNSHIP



HAMB DEN CENTER AND VICINITY

HAMB DEN TP.

HAMB DEN CENTER AND VICINITY



SCALE 1in.=25ch.or165m.

LOT 18  
HAMB DEN TWP.  
HAMB DEN CENTER  
DETAIL SHEET ACT 2

RELATIVE REPRESENTATION

JANUARY 1, 1994

\* Inadequate description

HAMB DEN

7 CTP